



# Energy-Limited Resource Consideration in the EDAM Resource Sufficiency Evaluation

CAISO EDAM Team

EDAM Working Group 1:  
Supply Commitment and Resource Sufficiency Evaluation

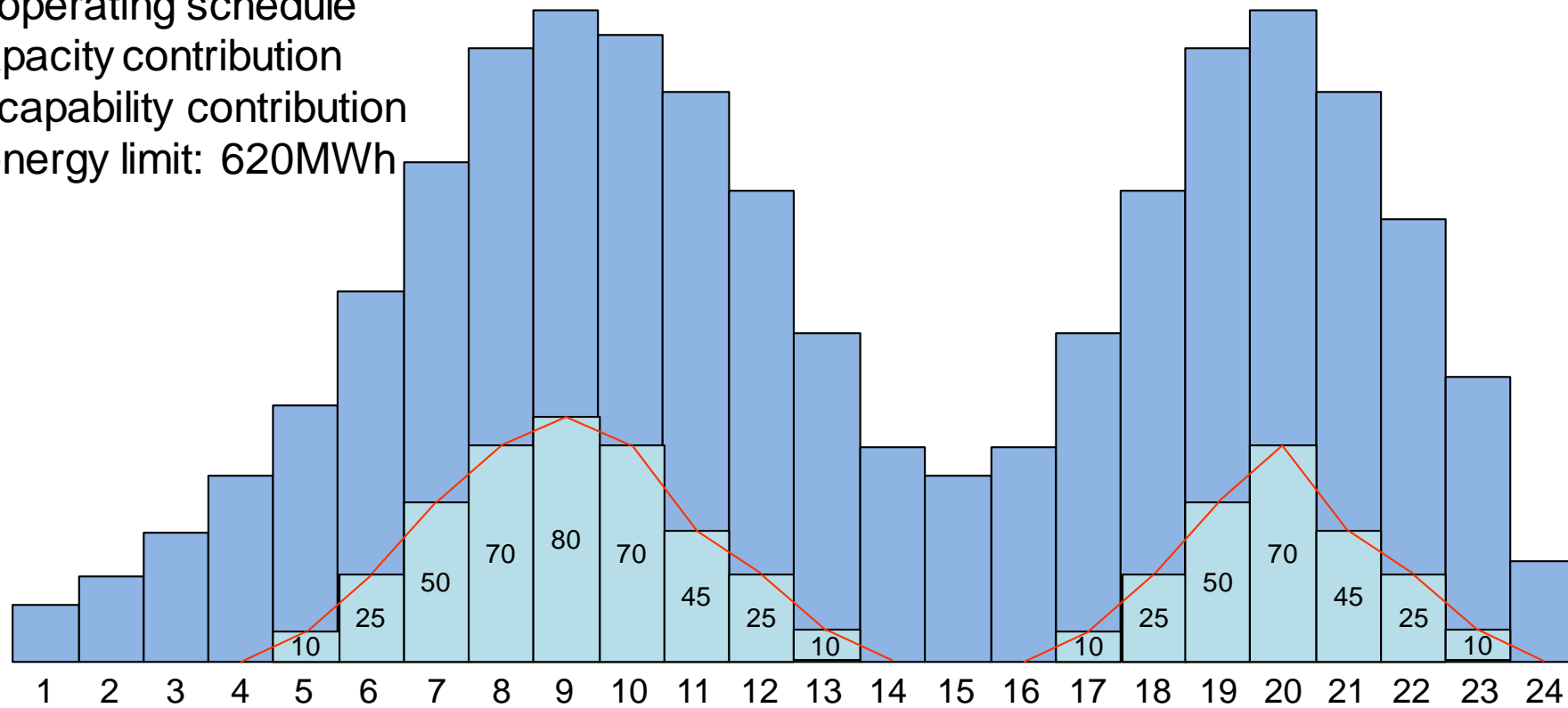
Wednesday, January 26, 2022

# Considering energy limits in the Resource Sufficiency Evaluation

- Energy limits restrict contributions to the RSE capacity and flexibility tests based on bids and ramp capability
- Hourly advisory operating schedule can be used instead
  - ◆ Submitted with the hourly bids (new day-ahead bid component)
    - Submission deadline: 9:00am, whereas bids can be revised up to 10:00am
    - Validated for feasibility
      - Must be within the energy bid range
      - Must not violate inter-temporal constraints from initial condition (e.g., start-up time, minimum up/down times, ramp rate, daily energy limit or state of charge)
  - ◆ Used only in RSE; day-ahead schedules and awards are based on bids

# Advisory operating schedule example for hydro resource

- Net demand forecast
  - Hydro operating schedule and capacity contribution
  - Ramp capability contribution
- Daily energy limit: 620MWh



# Advisory operating schedule example for storage resource

- Net demand forecast
- Storage operating schedule and capacity contribution
- Ramp capability contribution
- SOC limit: 40MWh

