

EIM Resource Sufficiency Workshop

June 25 & 28 2021

Arizona Public Service
Bonneville Power Administration
Portland General Electric
Powerex

Enhanced transparency, reporting and oversight

Enhanced Transparency and Reporting

- Improved transparency and reporting is necessary to support confidence that the RSE is accurate, consistently applied and effective
 - help EIM participants interpret and understand test results
 - evaluate the accuracy and effectiveness of the RSE on an ongoing basis
 - identify issues (and prioritize enhancements) in a timely manner
 - provide performance metrics to assist EIM Governing Body in its oversight role

Layers of RSE Transparency

1. Additional data available to participants
2. Standardized metrics
 - Routine reviews and special issue reports
 - Recent trends presented at recurring meetings, such as MPPF, MSC and DMM quarterly meetings
 - Contribute to a greater understanding of RSE failures and contributing factors
3. Consistent reporting to the EIM GB to facilitate oversight

1. Additional Data Transparency

Example report to summarize Capacity Test for each BAA:

| Available Capacity | HE1 | HE 2 | HE3 | ... | HE23 | HE24 |
|--------------------|-----|------|-----|-----|------|------|
| Gas | | | | | | |
| Hydro | | | | | | |
| Renewables | | | | | | |
| Non-EIM Imports | | | | | | |
| Nuclear & Other | | | | | | |
| Demand Response | | | | | | |

| BAA Obligations | HE1 | HE2 | HE3 | ... | HE23 | HE24 |
|-------------------------|-----|-----|-----|-----|------|------|
| Load Forecast | | | | | | |
| Exports | | | | | | |
| Uncertainty Requirement | | | | | | |
| Less: Diversity Benefit | | | | | | |

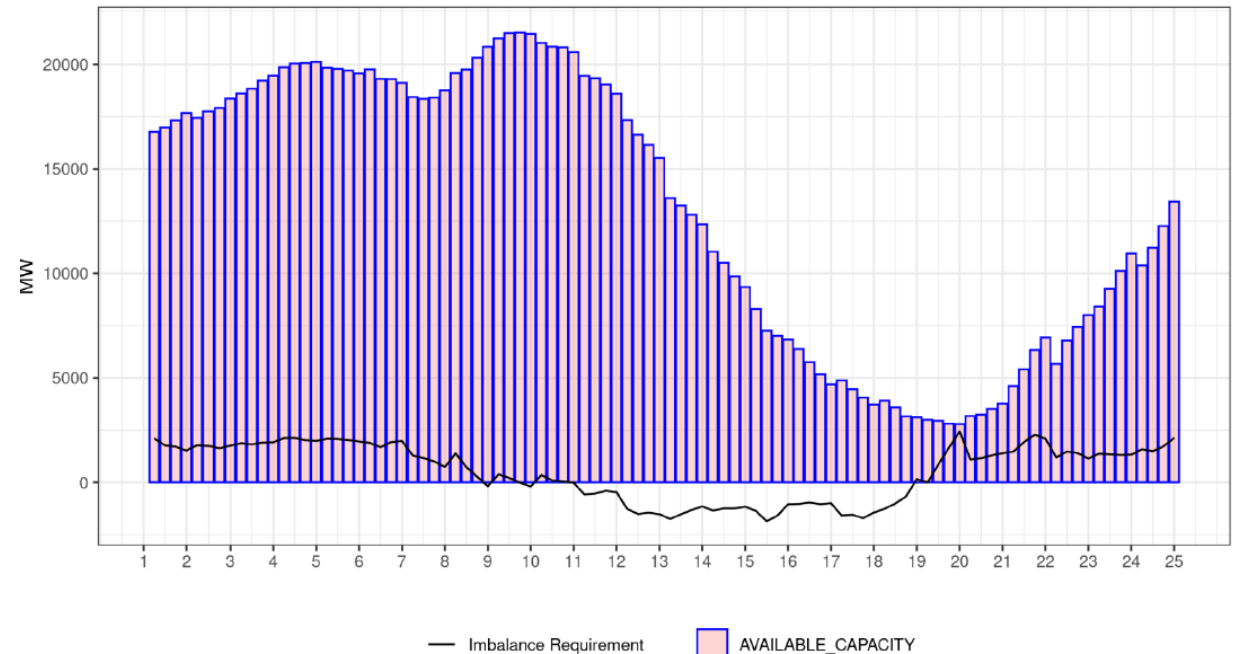
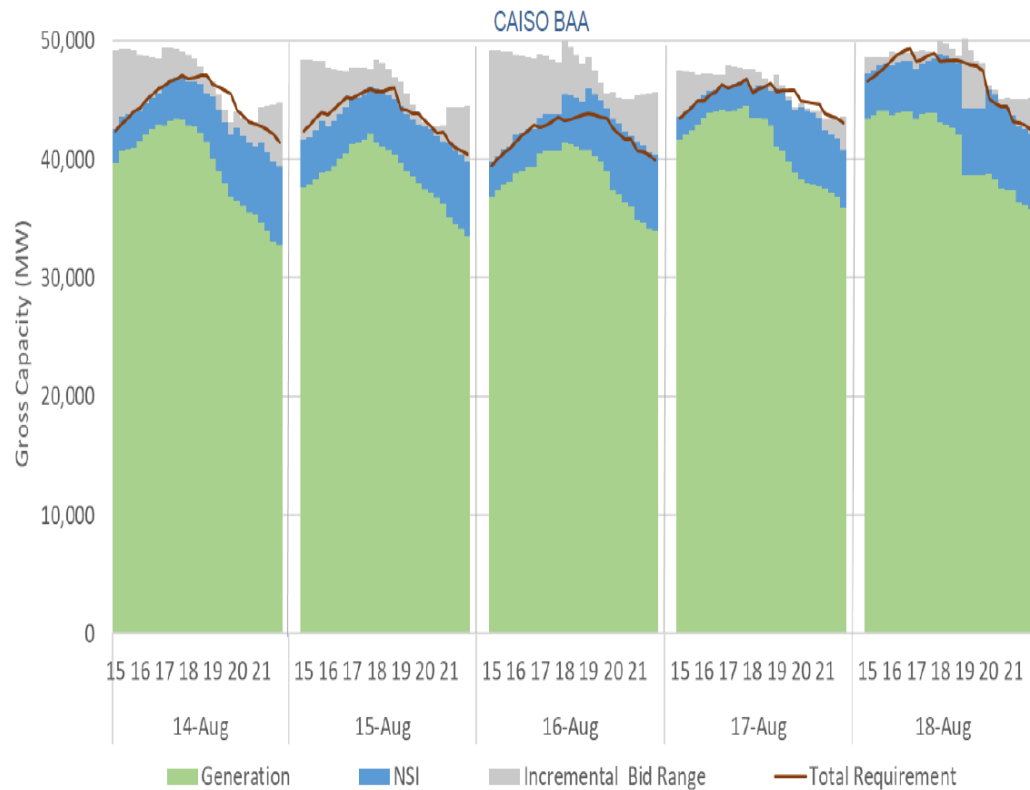
| PASS/FAIL AMOUNT (MW) | | | | | | |
|-----------------------|--|--|--|--|--|--|
|-----------------------|--|--|--|--|--|--|

2. Standardized Metrics

- **Performance metrics** to summarize RS results
 - e.g., pass/fail rates (similar reporting as today)
 - MW transfers during failure periods
 - Separate reporting for capacity and flexibility tests
- **Accuracy metrics** are also needed to evaluate whether RS is reflecting the true operating capabilities and obligations of each BAA
 - Comparison of actual real-time capacity vs. quantities included in RS test
 - Actual renewable output relative to forecasts used in RS Test
 - Actual load vs. load forecast used in the RS test, including role of load conformance
 - Overall evaluation of whether total RS requirements are accurate
 - *i.e.*, is the overall level of capacity/flexibility required by the RSE consistent with actual system conditions at a P95 confidence level?

2. Standardized Metrics

- **Presentation can enhance meaning:** graphic on the left is a more insightful metric – it focuses on pertinent intervals, adds surrounding days and bolsters context



2. Standardized Metrics

EXAMPLE - graphic mock-up for illustrative purposes only

| | Bid Range Capacity Test | | | | | | | | | | | | | | | | | | | | | | | | Flexible Capacity Sufficiency Test | | | | | | | | | | | | | | | | | | | | | | | | | | | | | | | | | |
|-------|-------------------------|---|---|---|---|----|---|---|---|----|----|----|----|----|----|----|----|----|----|----|----|----|----|----|------------------------------------|---|---|---|---|---|---|---|---|----|----|----|----|----|----|----|----|----|----|----|----|----|----|----|---|---|---|---|---|---|---|---|---|---|
| | 1 | 2 | 3 | 4 | 5 | 6 | 7 | 8 | 9 | 10 | 11 | 12 | 13 | 14 | 15 | 16 | 17 | 18 | 19 | 20 | 21 | 22 | 23 | 24 | 1 | 2 | 3 | 4 | 5 | 6 | 7 | 8 | 9 | 10 | 11 | 12 | 13 | 14 | 15 | 16 | 17 | 18 | 19 | 20 | 21 | 22 | 23 | 24 | | | | | | | | | | |
| APS | 0 | 0 | 0 | 0 | 0 | 0 | 0 | 0 | 0 | 0 | 0 | 0 | 0 | 0 | 0 | 0 | 0 | 0 | 0 | 0 | 0 | 0 | 0 | 0 | 0 | 0 | 0 | 0 | 0 | 0 | 0 | 0 | 0 | 0 | 0 | 0 | 0 | 0 | 0 | 0 | 0 | 0 | 0 | 0 | 0 | 0 | 0 | 0 | 0 | 0 | 0 | | | | | | | |
| BPA | 0 | 0 | 0 | 0 | 8 | 10 | 7 | 0 | 0 | 0 | 0 | 0 | 5 | 0 | 0 | 0 | 0 | 0 | 0 | 0 | 0 | 0 | 0 | 0 | 0 | 0 | 0 | 0 | 0 | 0 | 0 | 0 | 0 | 0 | 0 | 0 | 0 | 0 | 0 | 0 | 0 | 0 | 0 | 0 | 0 | 0 | 0 | 0 | 0 | 0 | 0 | | | | | | | |
| BANC | 0 | 0 | 0 | 0 | 0 | 0 | 0 | 0 | 0 | 0 | 0 | 0 | 0 | 0 | 0 | 0 | 0 | 0 | 0 | 0 | 0 | 0 | 0 | 0 | 0 | 0 | 0 | 0 | 0 | 0 | 0 | 0 | 0 | 0 | 0 | 0 | 0 | 0 | 0 | 0 | 0 | 0 | 0 | 0 | 0 | 0 | 0 | 0 | 0 | 0 | | | | | | | | |
| CAISO | 0 | 0 | 0 | 0 | 0 | 0 | 0 | 0 | 0 | 0 | 0 | 0 | 0 | 4 | 10 | 12 | 16 | 12 | 4 | 0 | 0 | 0 | 0 | 0 | 0 | 0 | 0 | 0 | 0 | 0 | 0 | 0 | 0 | 0 | 0 | 0 | 0 | 0 | 0 | 0 | 0 | 0 | 0 | 0 | 0 | 0 | 0 | 0 | 0 | 0 | 0 | 0 | | | | | | |
| Idaho | 0 | 0 | 0 | 0 | 0 | 0 | 0 | 0 | 0 | 0 | 0 | 0 | 0 | 0 | 0 | 0 | 0 | 0 | 0 | 0 | 0 | 0 | 0 | 0 | 0 | 0 | 0 | 0 | 0 | 0 | 0 | 0 | 0 | 0 | 0 | 0 | 0 | 0 | 0 | 0 | 0 | 0 | 0 | 0 | 0 | 0 | 0 | 0 | 0 | 0 | 0 | | | | | | | |
| NVE | 0 | 0 | 0 | 0 | 0 | 0 | 0 | 0 | 0 | 0 | 0 | 0 | 0 | 0 | 0 | 0 | 0 | 0 | 0 | 0 | 0 | 0 | 0 | 0 | 0 | 0 | 0 | 0 | 0 | 0 | 0 | 0 | 0 | 0 | 0 | 0 | 0 | 0 | 0 | 0 | 0 | 0 | 0 | 0 | 0 | 0 | 0 | 0 | 0 | 0 | 0 | | | | | | | |
| NEW | 0 | 0 | 0 | 0 | 0 | 0 | 0 | 0 | 0 | 0 | 0 | 0 | 0 | 0 | 0 | 0 | 0 | 0 | 0 | 0 | 0 | 0 | 0 | 0 | 0 | 0 | 0 | 0 | 0 | 0 | 0 | 0 | 0 | 0 | 0 | 0 | 0 | 0 | 0 | 0 | 0 | 0 | 0 | 0 | 0 | 0 | 0 | 0 | 0 | 0 | 0 | 0 | | | | | | |
| PAC | 0 | 0 | 0 | 0 | 0 | 0 | 0 | 0 | 0 | 0 | 0 | 0 | 0 | 0 | 0 | 0 | 0 | 0 | 0 | 0 | 0 | 0 | 0 | 0 | 0 | 0 | 0 | 0 | 0 | 0 | 0 | 0 | 0 | 0 | 0 | 0 | 0 | 0 | 0 | 0 | 0 | 0 | 0 | 0 | 0 | 0 | 0 | 0 | 0 | 0 | 0 | 0 | | | | | | |
| PGE | 0 | 0 | 0 | 0 | 0 | 0 | 0 | 0 | 0 | 0 | 0 | 0 | 0 | 0 | 0 | 0 | 0 | 0 | 0 | 0 | 0 | 0 | 0 | 0 | 0 | 0 | 0 | 0 | 0 | 0 | 0 | 0 | 0 | 0 | 0 | 0 | 0 | 0 | 0 | 0 | 0 | 0 | 0 | 0 | 0 | 0 | 0 | 0 | 0 | 0 | 0 | 0 | | | | | | |
| PSE | 0 | 0 | 0 | 0 | 0 | 0 | 0 | 0 | 0 | 0 | 0 | 0 | 0 | 0 | 0 | 0 | 0 | 0 | 0 | 0 | 0 | 0 | 0 | 0 | 0 | 0 | 0 | 0 | 0 | 0 | 0 | 0 | 0 | 0 | 0 | 0 | 0 | 0 | 0 | 0 | 0 | 0 | 0 | 0 | 0 | 0 | 0 | 0 | 0 | 0 | 0 | 0 | 0 | | | | | |
| PWX | 0 | 0 | 0 | 0 | 0 | 0 | 0 | 0 | 0 | 0 | 0 | 0 | 0 | 0 | 0 | 0 | 0 | 0 | 0 | 0 | 0 | 0 | 0 | 0 | 0 | 0 | 0 | 0 | 0 | 0 | 0 | 0 | 0 | 0 | 0 | 0 | 0 | 0 | 0 | 0 | 0 | 0 | 0 | 0 | 0 | 0 | 0 | 0 | 0 | 0 | 0 | 0 | 0 | | | | | |
| SRP | 0 | 0 | 0 | 0 | 0 | 0 | 0 | 0 | 0 | 0 | 0 | 0 | 0 | 0 | 0 | 0 | 0 | 0 | 0 | 0 | 0 | 0 | 0 | 0 | 0 | 0 | 0 | 0 | 0 | 0 | 0 | 0 | 0 | 0 | 0 | 0 | 0 | 0 | 0 | 0 | 0 | 0 | 0 | 0 | 0 | 0 | 0 | 0 | 0 | 0 | 0 | 0 | 0 | | | | | |
| TEP | 0 | 0 | 0 | 0 | 0 | 0 | 0 | 0 | 0 | 0 | 0 | 0 | 0 | 0 | 0 | 0 | 0 | 0 | 0 | 0 | 0 | 0 | 0 | 0 | 0 | 0 | 0 | 0 | 0 | 0 | 0 | 0 | 0 | 0 | 0 | 0 | 0 | 0 | 0 | 0 | 0 | 0 | 0 | 0 | 0 | 0 | 0 | 0 | 0 | 0 | 0 | 0 | 0 | 0 | | | | |
| TPWR | 0 | 0 | 0 | 0 | 0 | 0 | 0 | 0 | 0 | 0 | 0 | 0 | 0 | 0 | 0 | 0 | 0 | 0 | 0 | 0 | 0 | 0 | 0 | 0 | 0 | 0 | 0 | 0 | 0 | 0 | 0 | 0 | 0 | 0 | 0 | 0 | 0 | 0 | 0 | 0 | 0 | 0 | 0 | 0 | 0 | 0 | 0 | 0 | 0 | 0 | 0 | 0 | 0 | 0 | 0 | 0 | 0 | 0 |

The two orange circles show the two tests yielding different results for the number of intervals failed which warrants further exploration.

The two yellow circles show the Capacity and Flex tests working in tandem with the same results.

3. Oversight to EIM Governing Body

- RS is foundational to EIM and additional oversight is necessary to ensure the RSE is functioning as intended
- The EIM Governing Body must have access to sufficient data, analysis and perspectives
- Should include consistent reporting to the EIM GB each calendar quarter:
 - Routine review of RSE performance (pass/fails, transfer quantities, etc.)
 - Review of RS accuracy metrics
 - Review any issues/recommendations raised by DMM, GBME, and/or stakeholders