



# 2026 & 2030 Draft LCR Study Results North Coast & North Bay Area

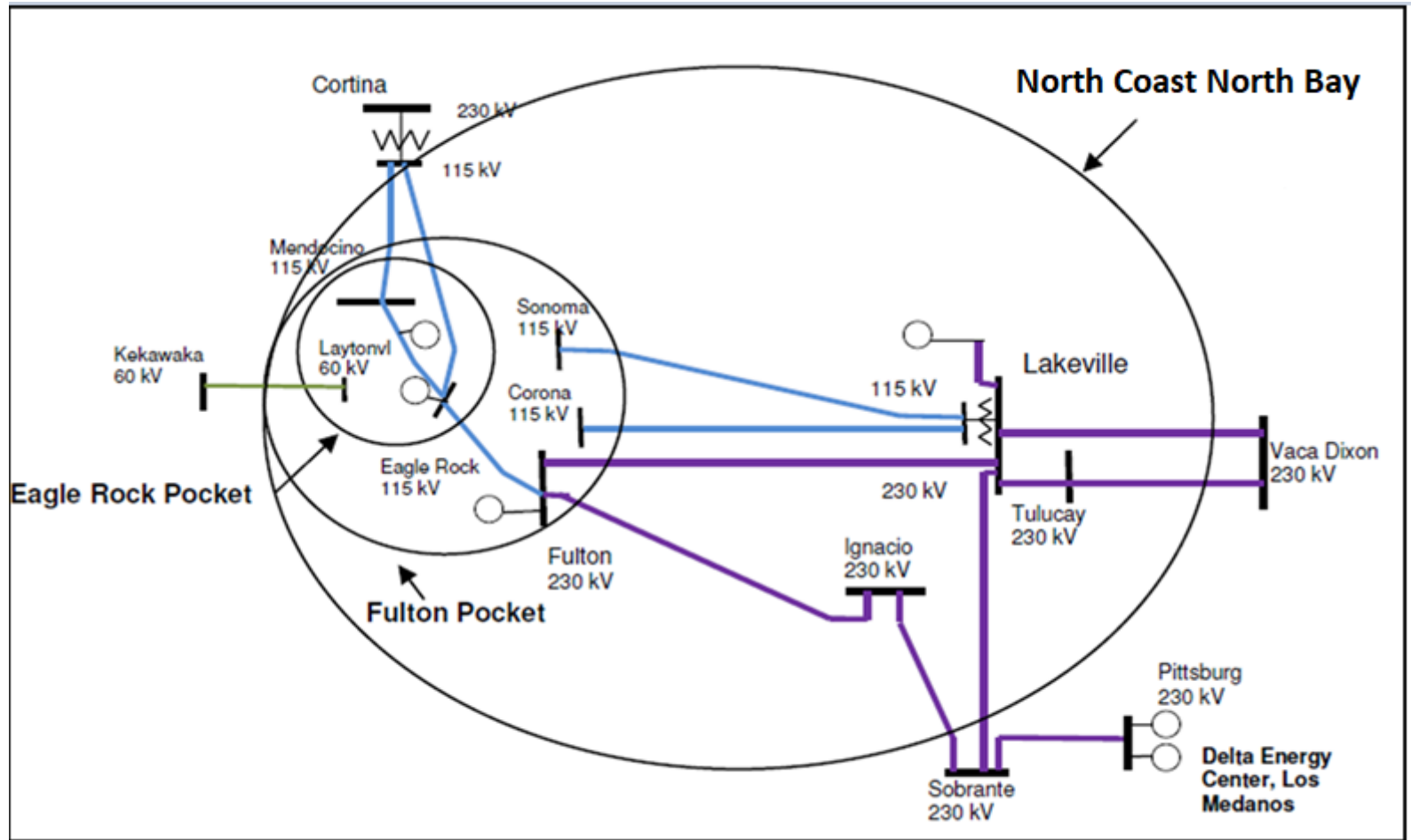
Bryan Fong

Regional Transmission North

Stakeholder Call

March 6, 2025

# North Coast & Bay Area Transmission System



# Major transmission projects

Project Name	Expected ISD
Lakeville 60 kV Area Reinforcement	Dec 2028
Clear Lake 60 kV System Reinforcement	Oct 2030
Vaca Dixon-Lakeville 230 kV Corridor Series Compensation	Nov 2026
Tulucay-Napa #2 60 kV line Reconductoring project	July 2027
Santa Rosa 115 kV lines Reconductoring project	Oct 2029
New Collinsville 500 kV Substation	May 2028

## Resource Additions:

- A few small energy only resource additions

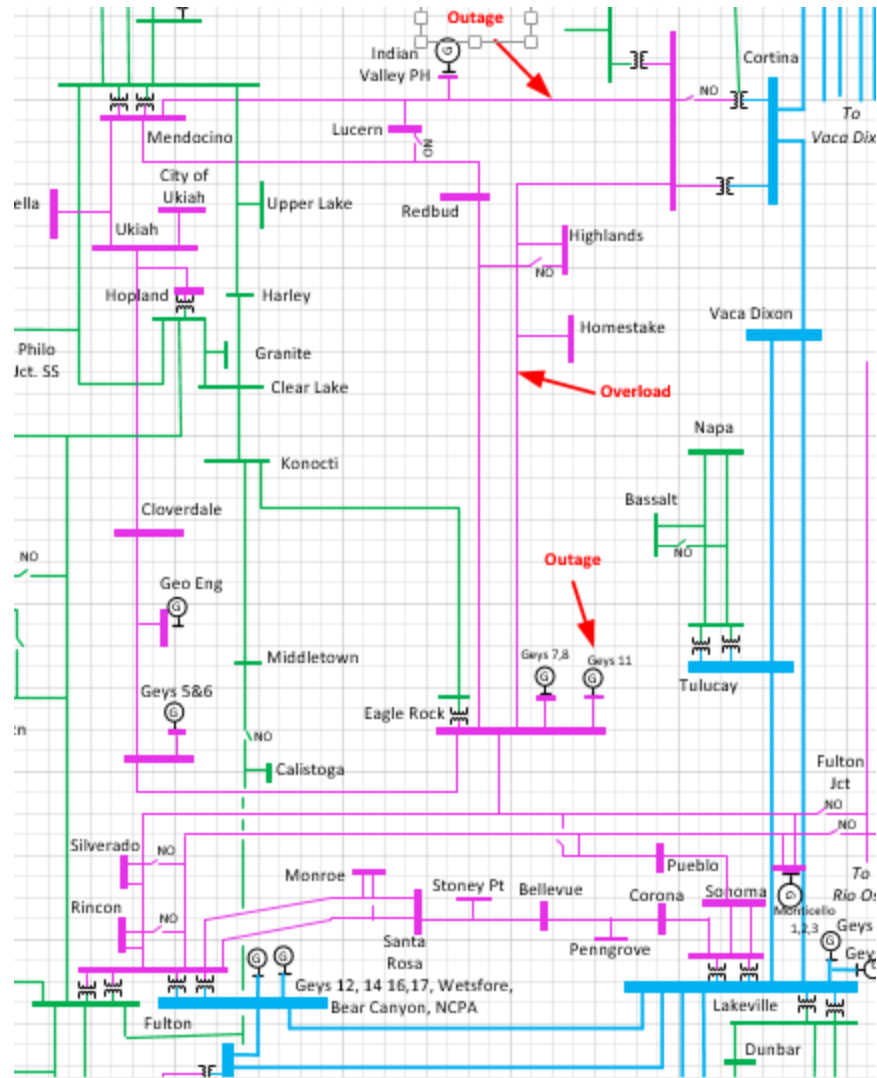
## Resource Retirements:

- No new retirements

## Eagle Rock Sub-area: Load and Resources

Load (MW)	2026	2030	Generation (MW)	2026	2030
Gross Load	279	300	Market/Net Seller	279	279
AAEE	-3	-4	Battery	0	0
Behind the meter DG	-4	-5	Muni/QF	2	2
<b>Net Load</b>	<b>272</b>	<b>291</b>	Solar	0	0
Transmission Losses	15	17	Existing 20-minute Demand Response	0	0
Pumps	0	0	Mothballed	0	0
<b>Load + Losses + Pumps</b>	<b>287</b>	<b>308</b>	<b>Total Qualifying Capacity</b>	<b>281</b>	<b>281</b>

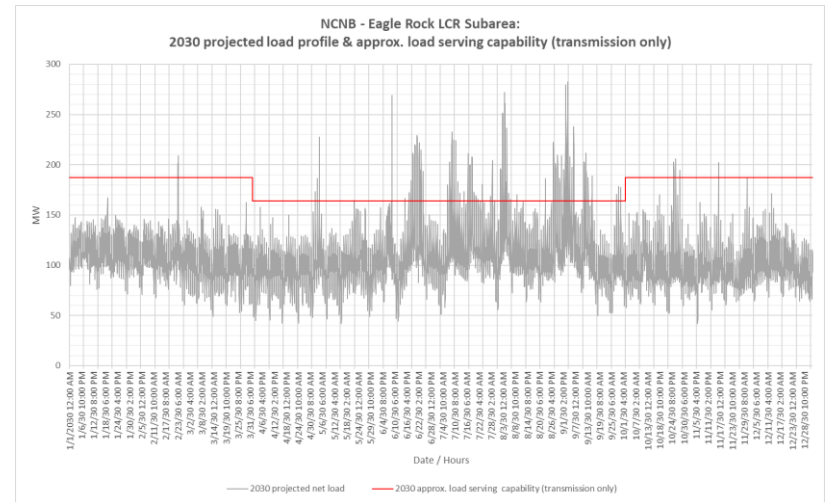
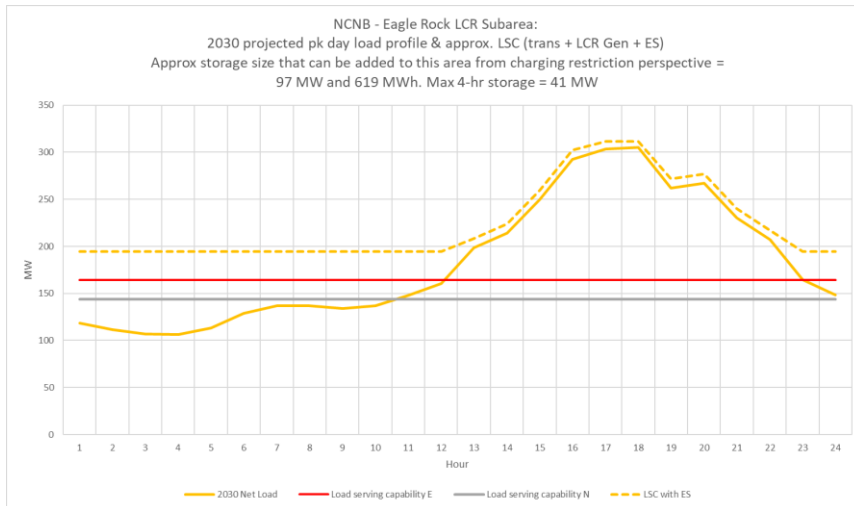
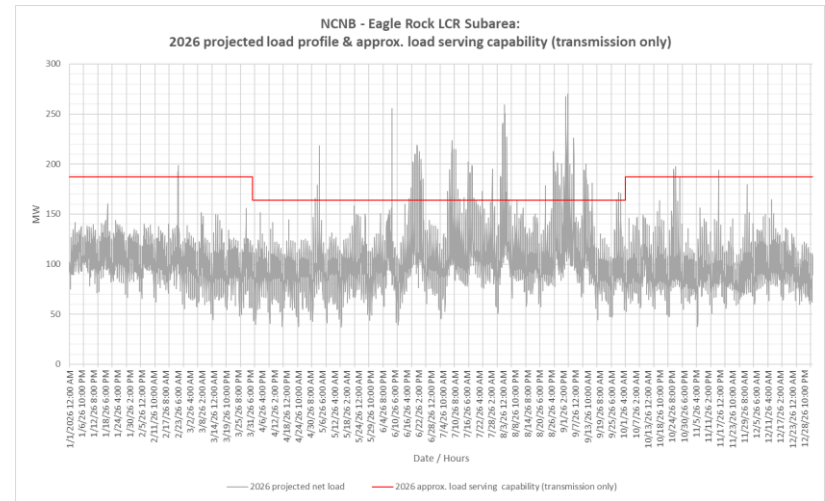
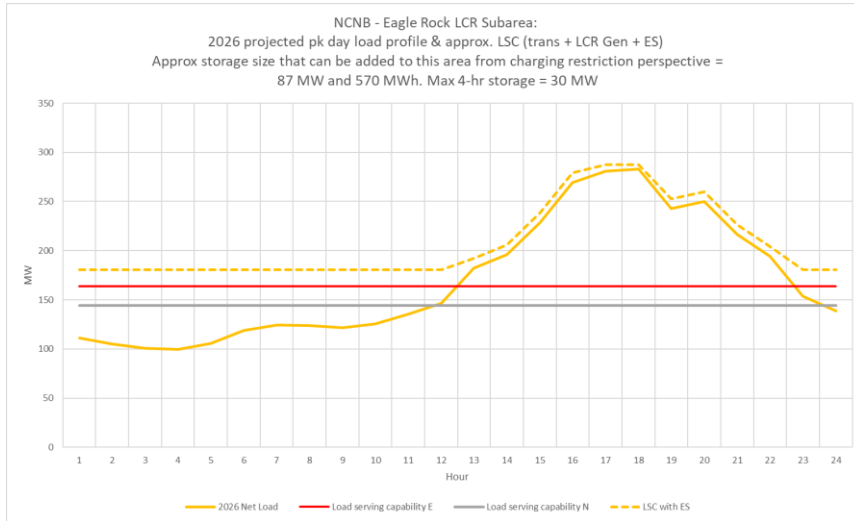
# Eagle Rock Sub-Area: One-line diagram



# Eagle Rock Sub-Area: Requirements

Year	Limit	Category	Limiting Facility	Contingency	LCR (MW) (Deficiency)
2026	First Limit	P3	Thermal overload on Eagle Rock-Cortina 115 kV line	Cortina-Mendocino 115 kV line with Geyser #11 unit out of service	247
2030	First Limit	P3	Thermal overload on Eagle Rock-Cortina 115 kV line	Cortina-Mendocino 115 kV line with Geyser #11 unit out of service	268

# Eagle Sub-area: Load Profiles

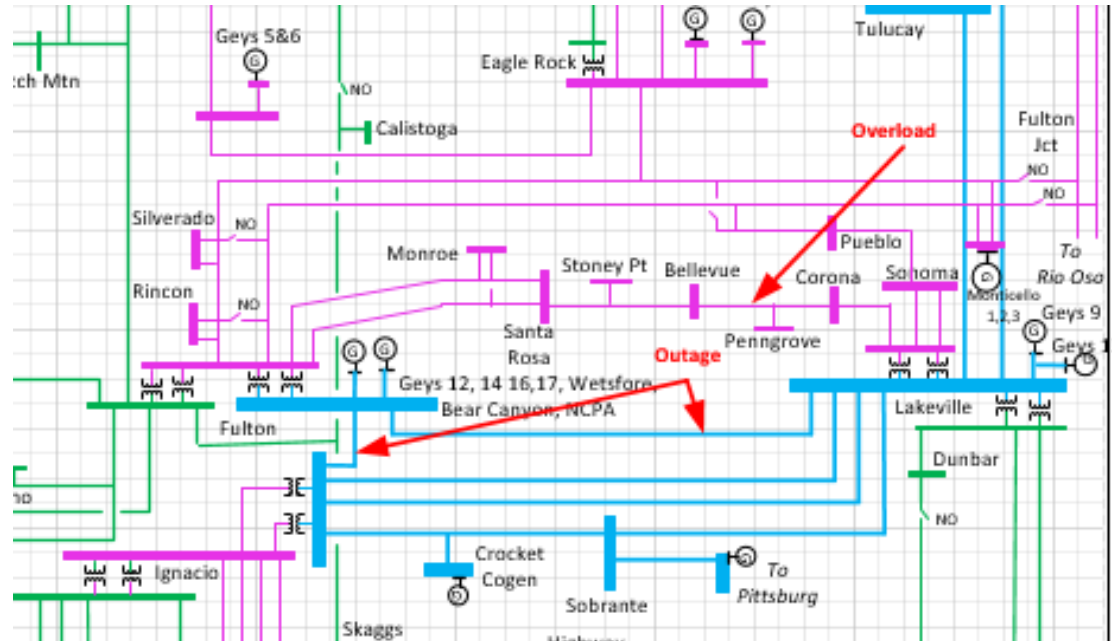


## Fulton Sub-area: Load and Resources

<b>Load (MW)</b>	<b>2026</b>	<b>2030</b>	<b>Generation (MW)</b>	<b>2026</b>	<b>2030</b>
Gross Load	892	959	Market/Net Seller/Wind	544	544
AAEE	-10	-17	Battery	38	38
Behind the meter DG	-16	-20	Muni/QF	56	56
<b>Net Load</b>	<b>866</b>	<b>922</b>	Solar	0	0
Transmission Losses	27	26	Existing 20-minute Demand Response	0	0
Pumps	0	0	Mothballed	0	0
<b>Load + Losses + Pumps</b>	<b>893</b>	<b>948</b>	<b>Total Qualifying Capacity</b>	<b>638</b>	<b>638</b>



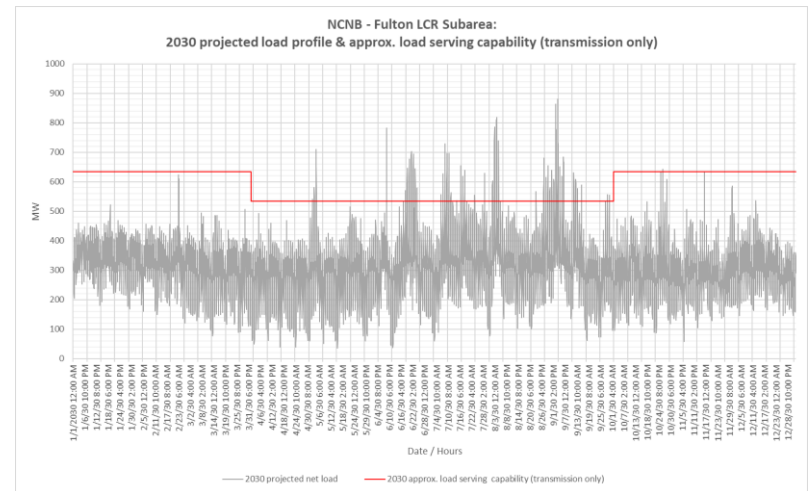
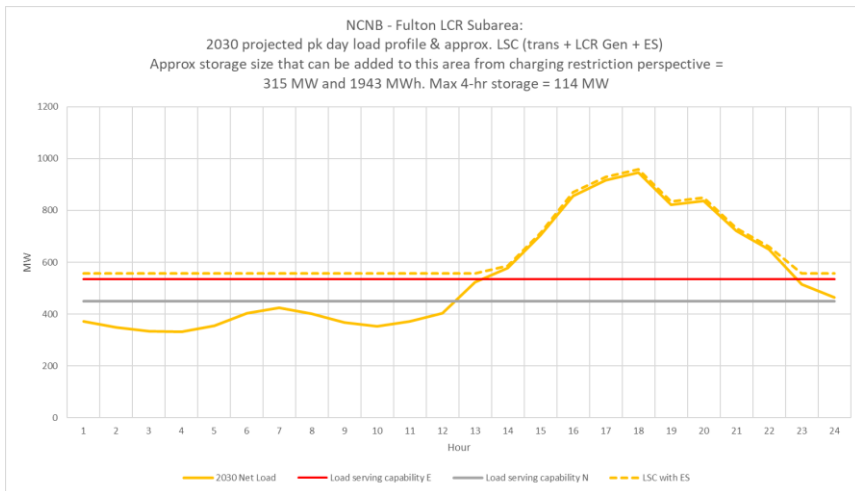
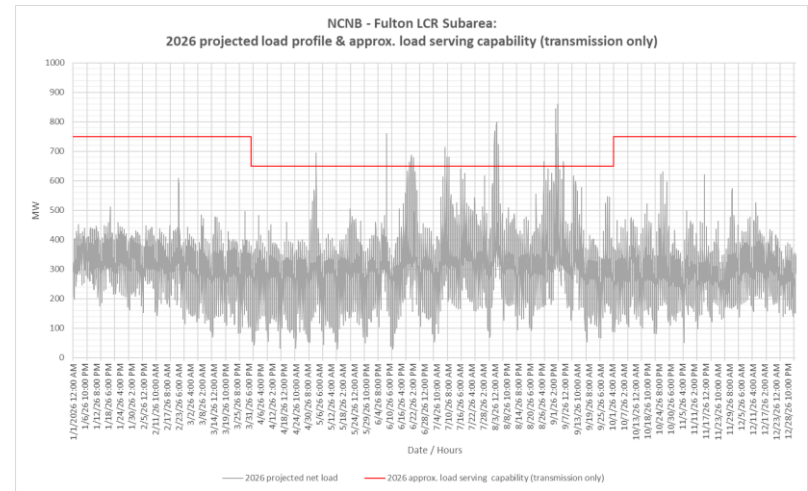
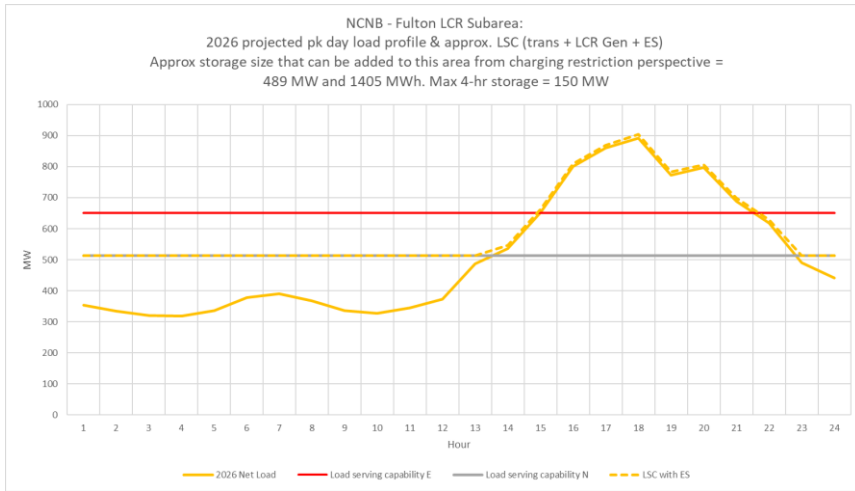
# Fulton Sub-Area: One-line diagram



# Fulton Sub-Area: Requirements

Year	Limit	Category	Limiting Facility	Contingency	LCR (MW) (Deficiency)
2026	First Limit	P6	Thermal overload on Lakeville-Corona 115kV Line	Fulton-Lakeville and Fulton-Ignacio 230 kV lines	489
2030	First Limit	P6	Thermal overload on Eagle Rock-Cortina 115 kV line	Fulton-Lakeville and Fulton-Ignacio 230 kV lines	542

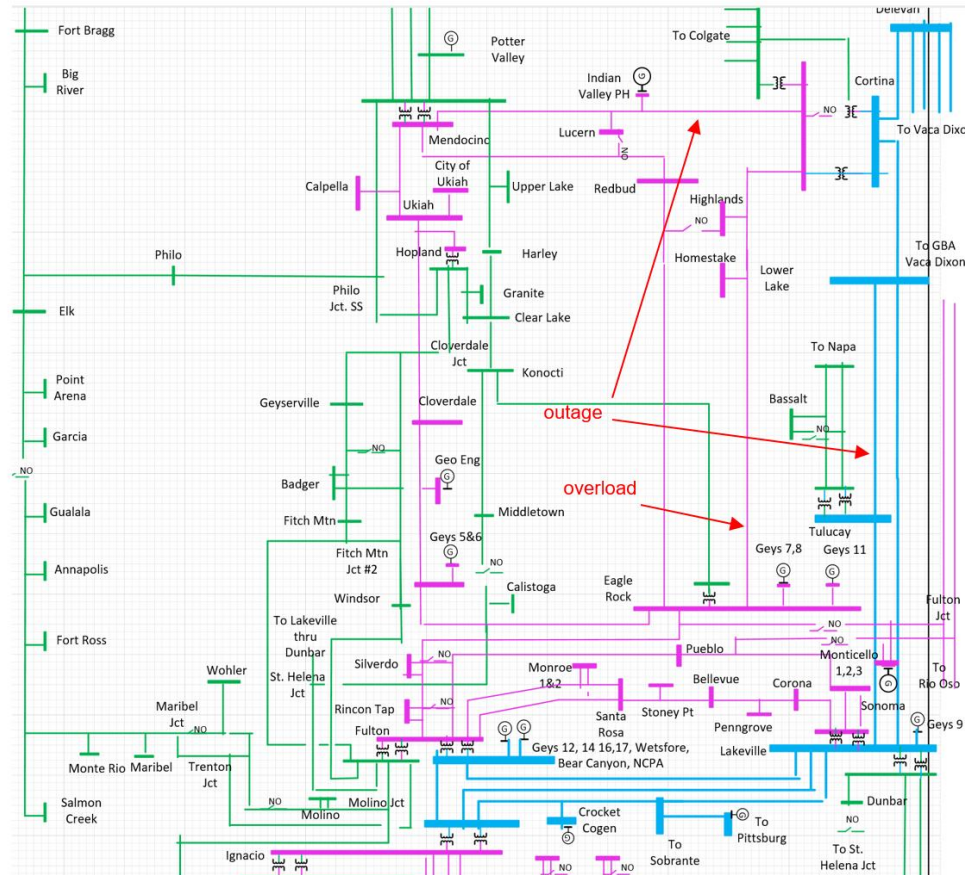
# Fulton Sub-area: Load Profiles



## NCNB Overall: Load and Resources

Load (MW)	2026	2030	Generation (MW)	2026	2030
Gross Load	1466	1584	Market/Net Seller/Wind	843	843
AAEE	-18	-28	Battery	38	38
Behind the meter DG	-27	-34	Muni/QF	135	135
<b>Net Load</b>	<b>1421</b>	<b>1522</b>	Solar	0	0
Transmission Losses	44	40	Existing 20-minute Demand Response	12	12
Pumps	0	0	Mothballed	0	0
<b>Load + Losses + Pumps</b>	<b>1465</b>	<b>1562</b>	<b>Total Qualifying Capacity</b>	<b>1028</b>	<b>1028</b>

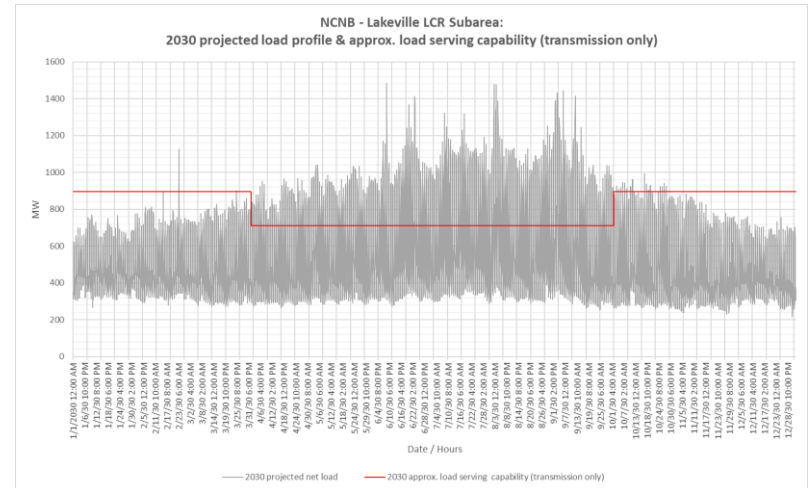
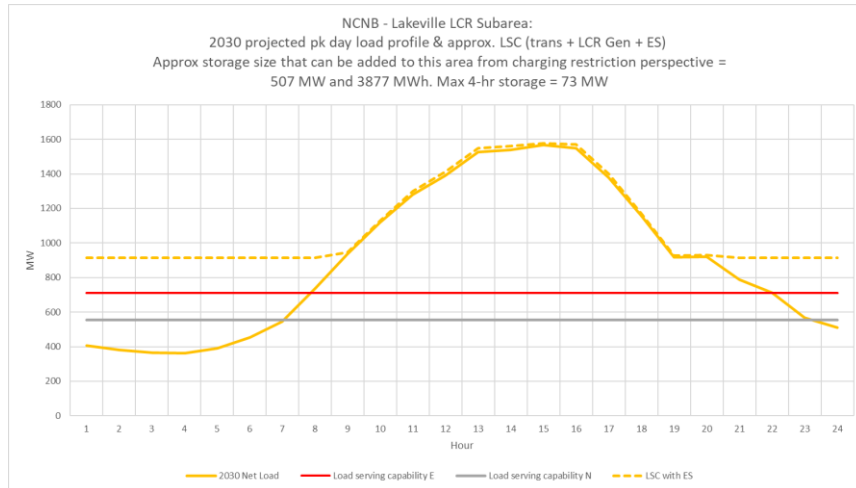
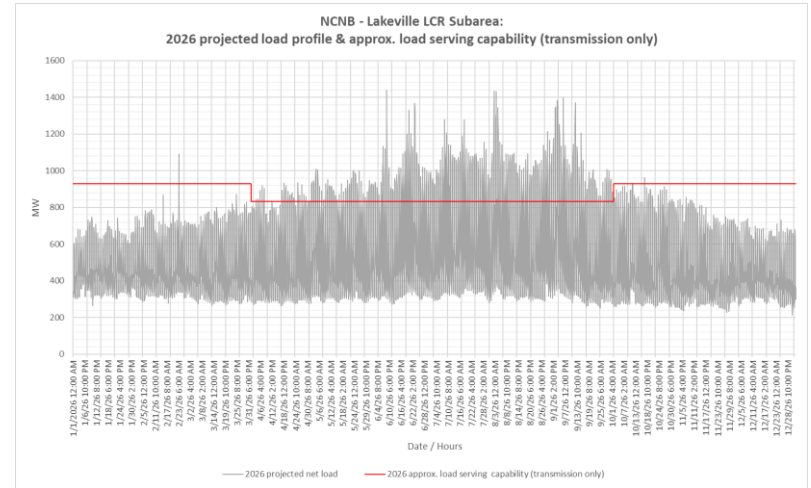
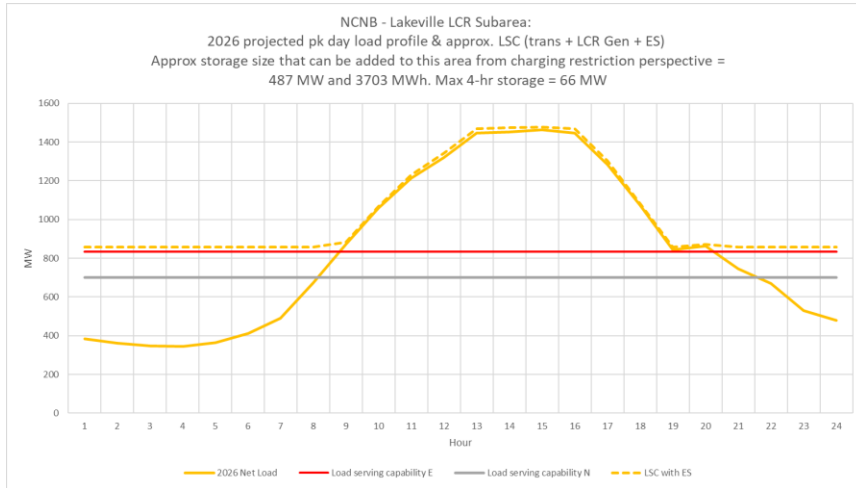
# NCNB Area: One-line diagram



# NCNB Overall Area: Requirement

Year	Limit	Category	Limiting Facility	Contingency	LCR (MW) (Deficiency)
2026	First	P3	Vaca Dixon-Tulucay 230 kV line	Vaca Dixon-Lakeville 230 kV line with Delta Energy Center power plant out of service	848
2030	First	P6	Thermal overload on Eagle Rock-Cortina 115 kV line	Vaca Dixon-Tulucay 230 kV and Cortina- Mendocino 115 kV lines	606

# NCNB: Load Profiles



# North Coast & North Bay Area Total Generation & LCR Need

Generation	Market/Net Seller (MW)	Battery (MW)	Muni/QF (MW)	Solar (MW)	DR (MW)	Total MW
2026	843	38	135	0	12	1028
2030	843	38	135	0	12	1028

Year	LCR Need	Generation Capacity Needed (MW)	Deficiency (MW)	Total MW Need
2026	P3	848	0	848
2030	P6	606	0	606



# Changes Compared to Previous LCR Requirements

Sub-area	2025		2026		2029		2030	
	Load	LCR	Load	LCR	Load	LCR	Load	LCR
<b>Eagle Rock</b>	244	186	287	247	246	149	308	268
<b>Fulton</b>	884	333	893	489	887	383	948	542
<b>NCNB Overall</b>	1483	967	1465	848	1517	650	1562	606

The decrease in 2026 overall LCR need is mostly due to decreased load and higher requirements in the Ames/Pittsburg/Oakland sub-area of the Bay Area. The decrease in 2030 overall LCR need is mostly due to approved projects.