



Imbalance Reserves (IR) Mosaic Parameter Results and Summary: Stakeholder Session 2 – Supplemental Figures

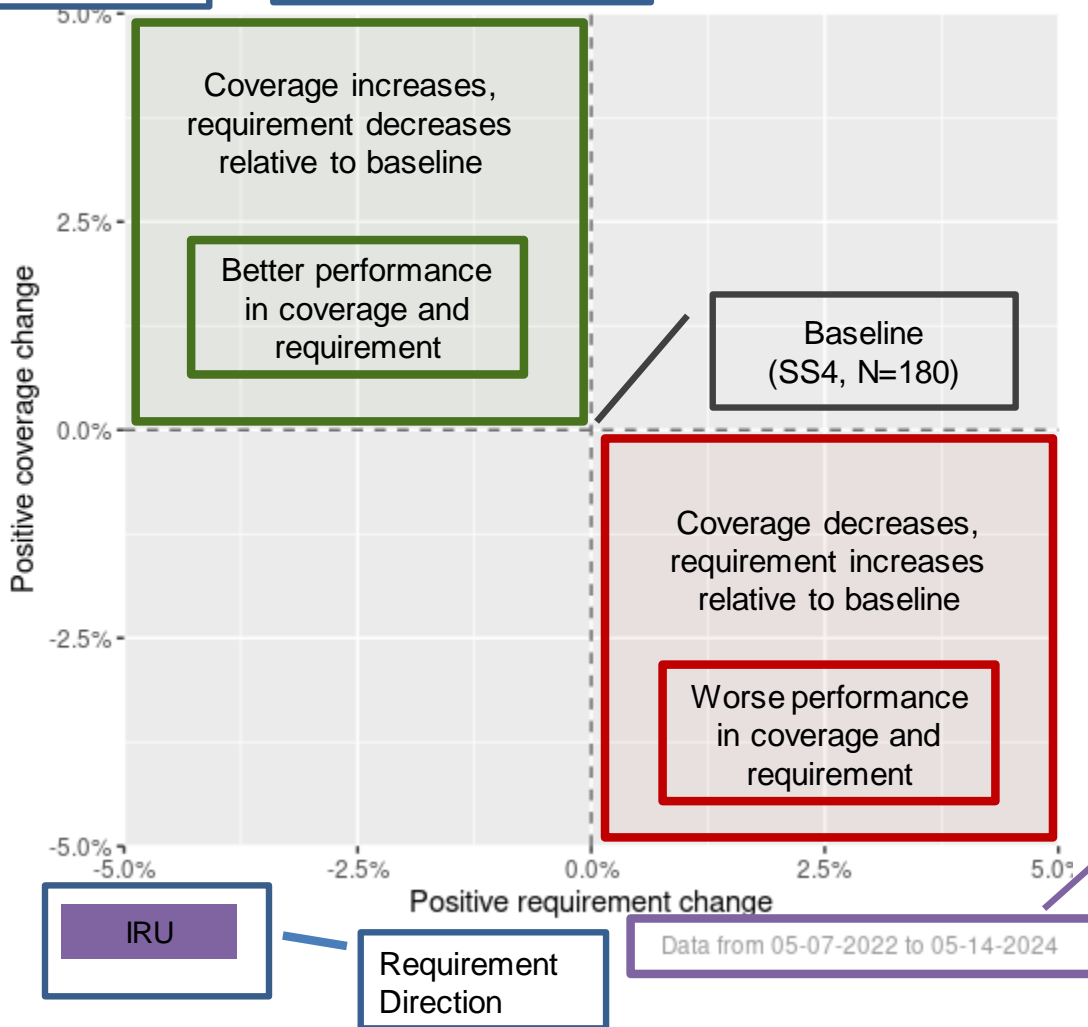
Tobiah Steckel

Short Term Forecasting

Explainer for pareto-type period summary plot

Ensemble 3

Ensemble number



Axes represent a scaled change relative to a specified “baseline” performance

x-axis – Positive requirement change
Average upward requirement (x)
 $(x_2 - x_1) / x_1$

y-axis – Positive coverage change
Average upward coverage (y)
 $(y_2 - y_1) / y_1$

Upper left and lower right quadrants represent clear performance improvement or degradation. Upper right and lower left quadrants present mixed results. Typically, increased requirements coincide with increased coverage.

Time range used to produce results

Results are presented in their order of evaluation

Ensemble 1	Sample Scheme
Ensemble 3	QA Application
Ensemble 4	Dynamic Threshold Percentile
Ensemble 5	Static Threshold Sample

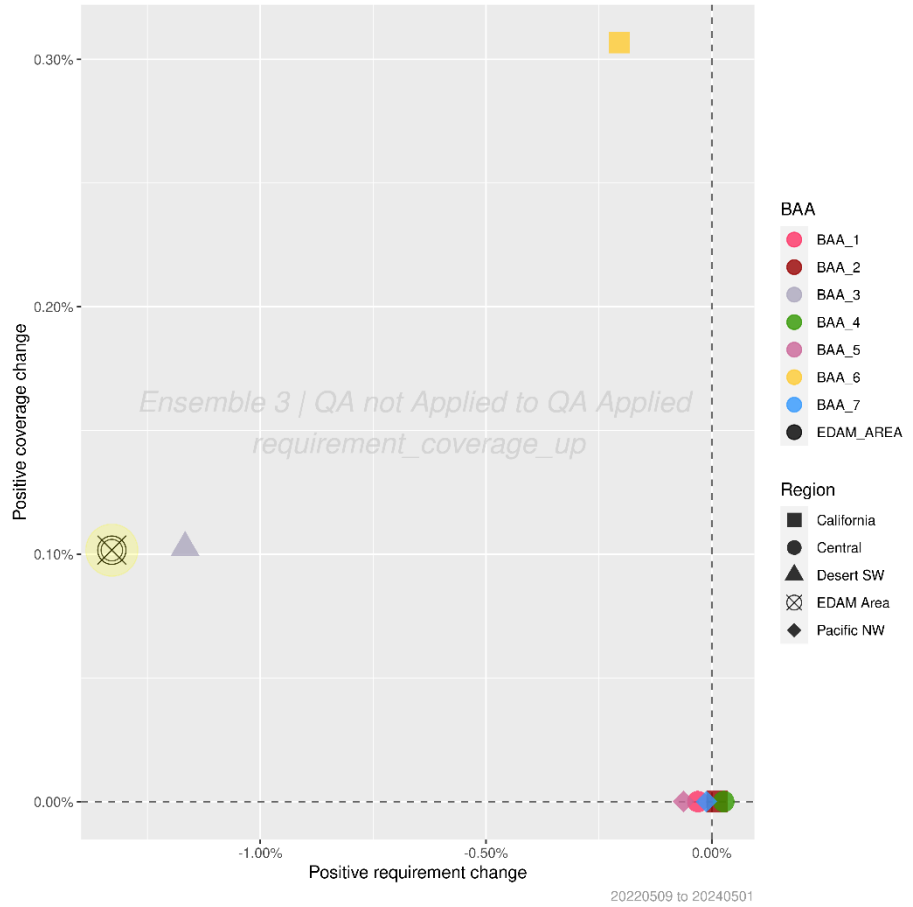
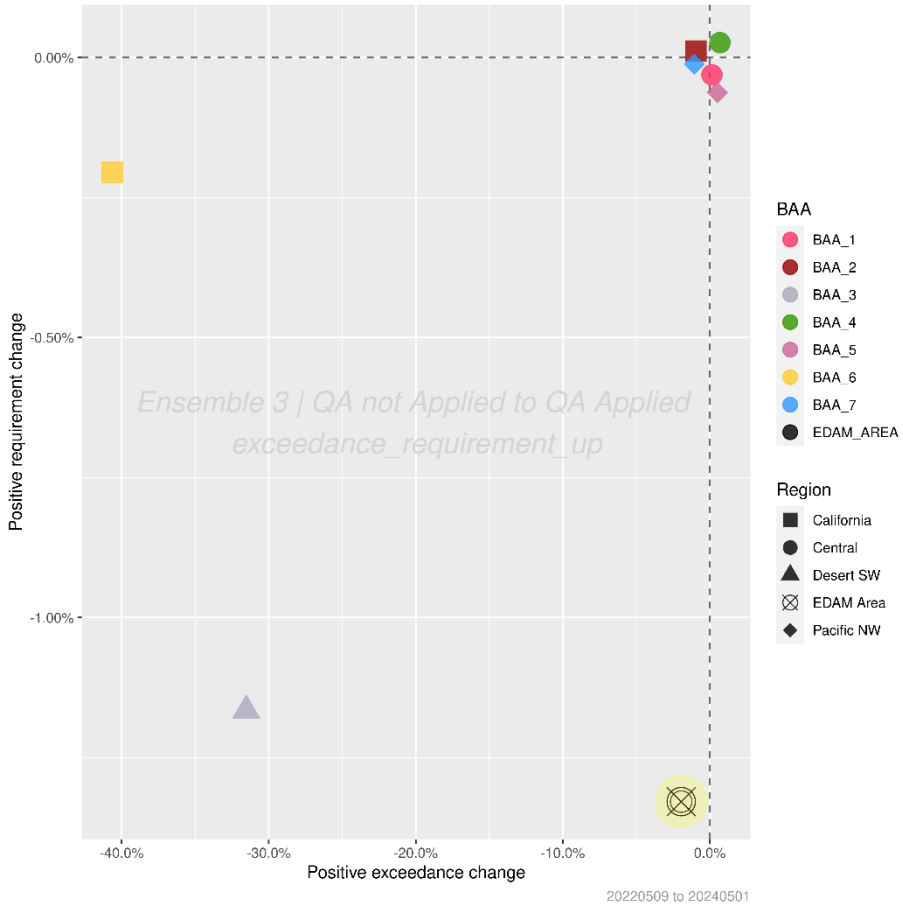
Results are presented by requirement direction

IRU	Upward Imbalance Reserve
IRD	Downward Imbalance Reserve
BOTH	Both directions

February Meeting

MOSAIC PARAMETER RESULTS

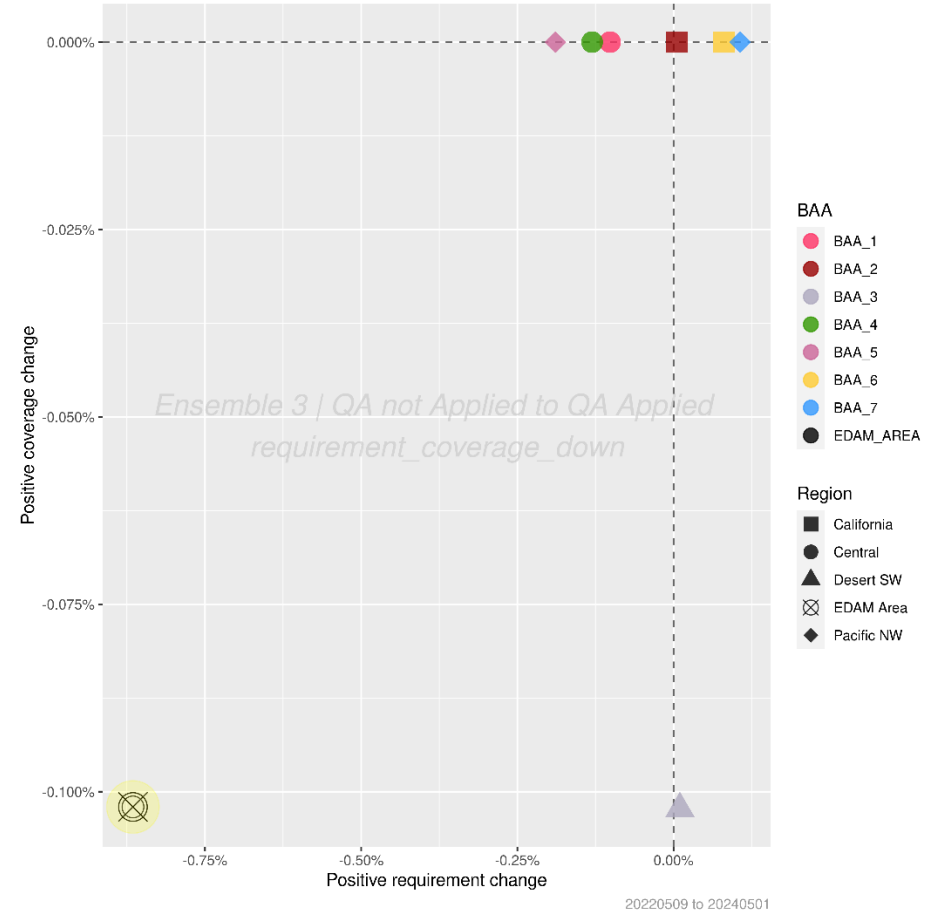
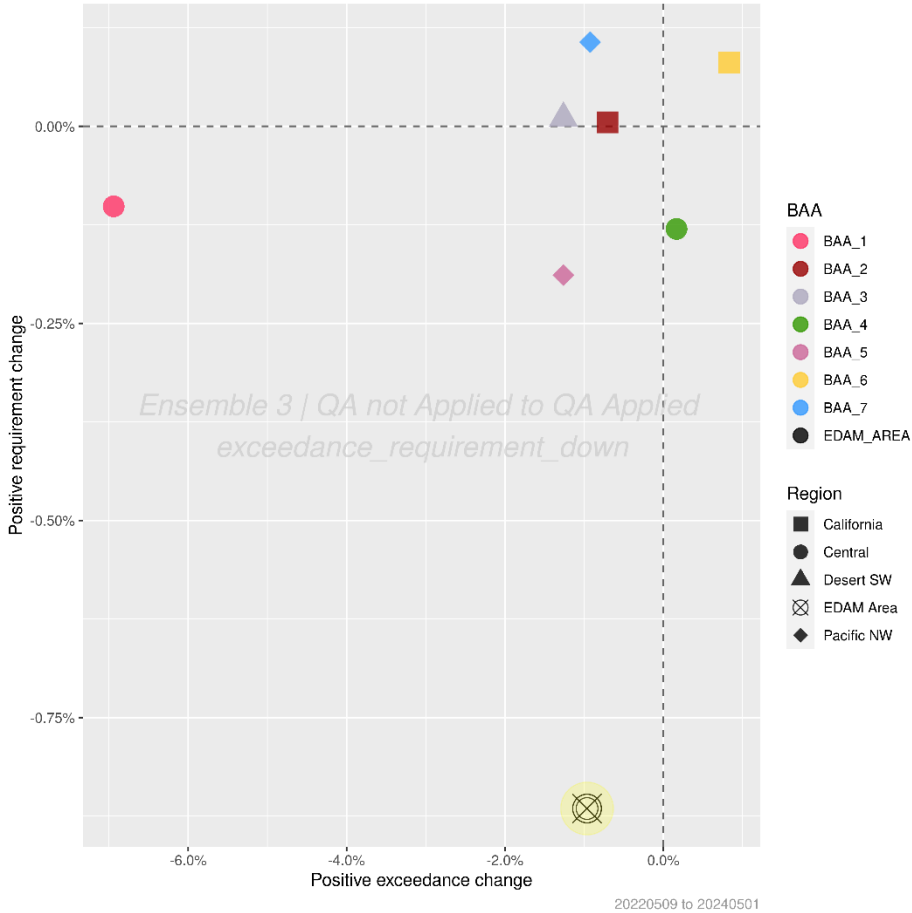
Ensemble 3



IRU

IRU

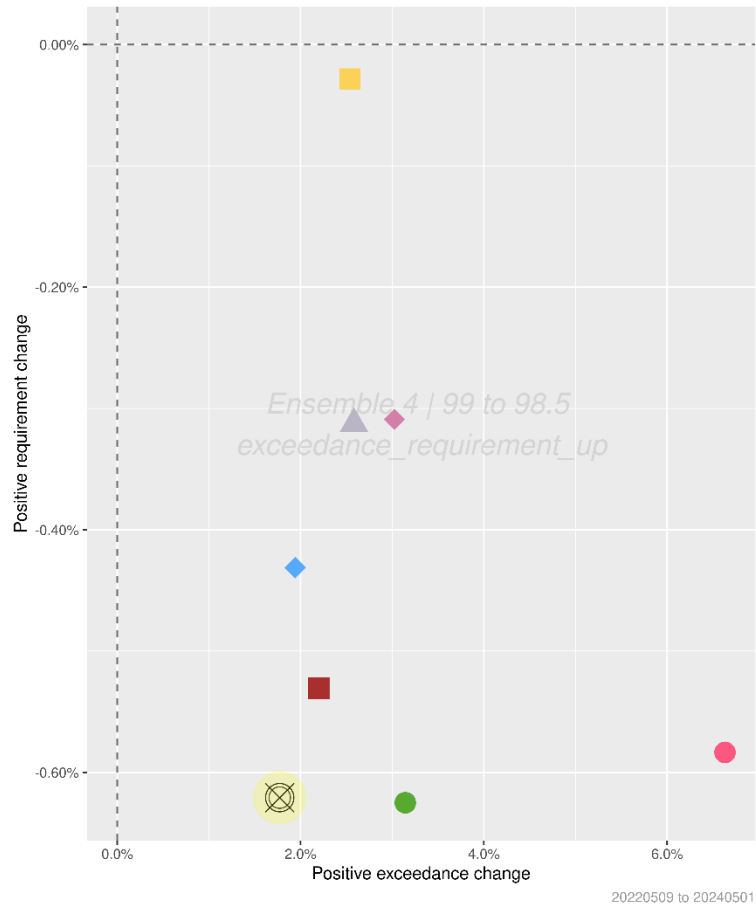
Ensemble 3



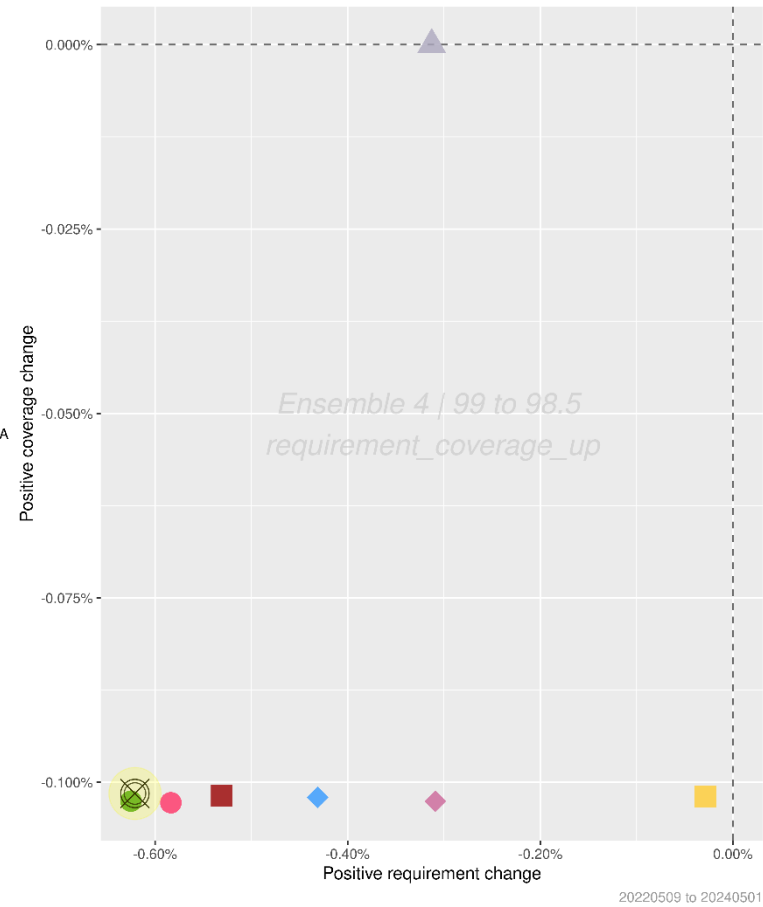
IRD

IRD

Ensemble 4



- BAA**
- BAA_1
 - BAA_2
 - BAA_3
 - BAA_4
 - BAA_5
 - BAA_6
 - BAA_7
 - EDAM_AREA
- Region**
- California
 - Central
 - Desert SW
 - EDAM Area
 - Pacific NW

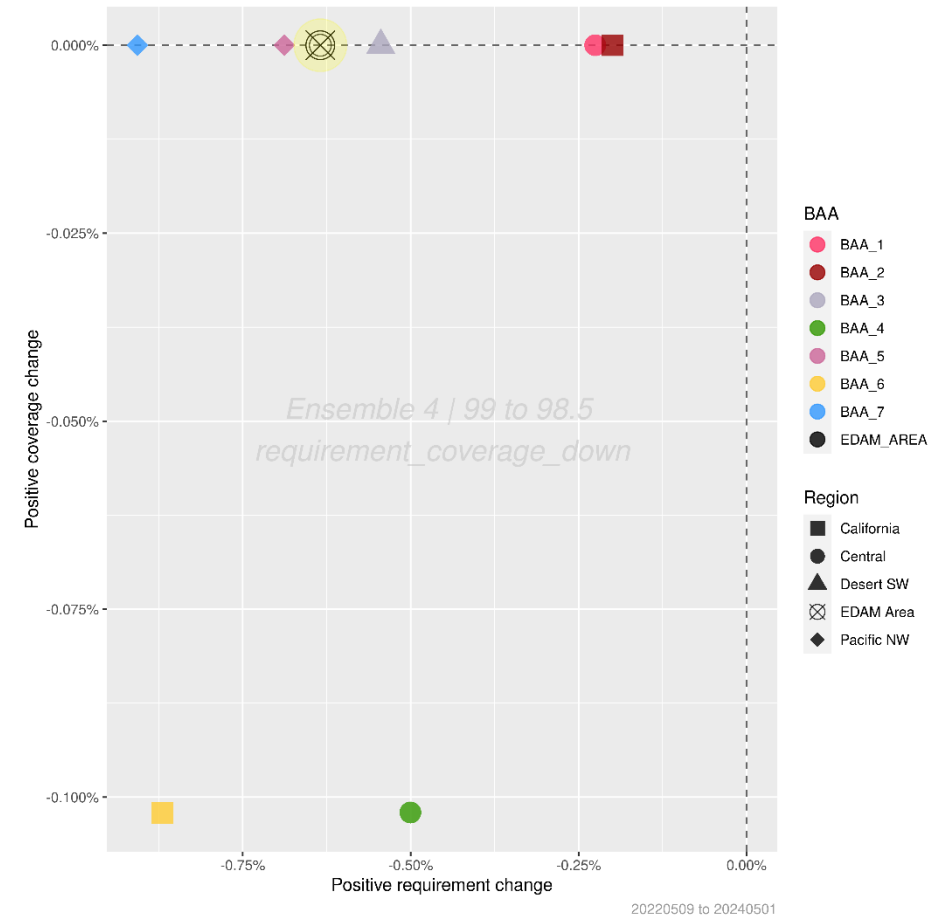
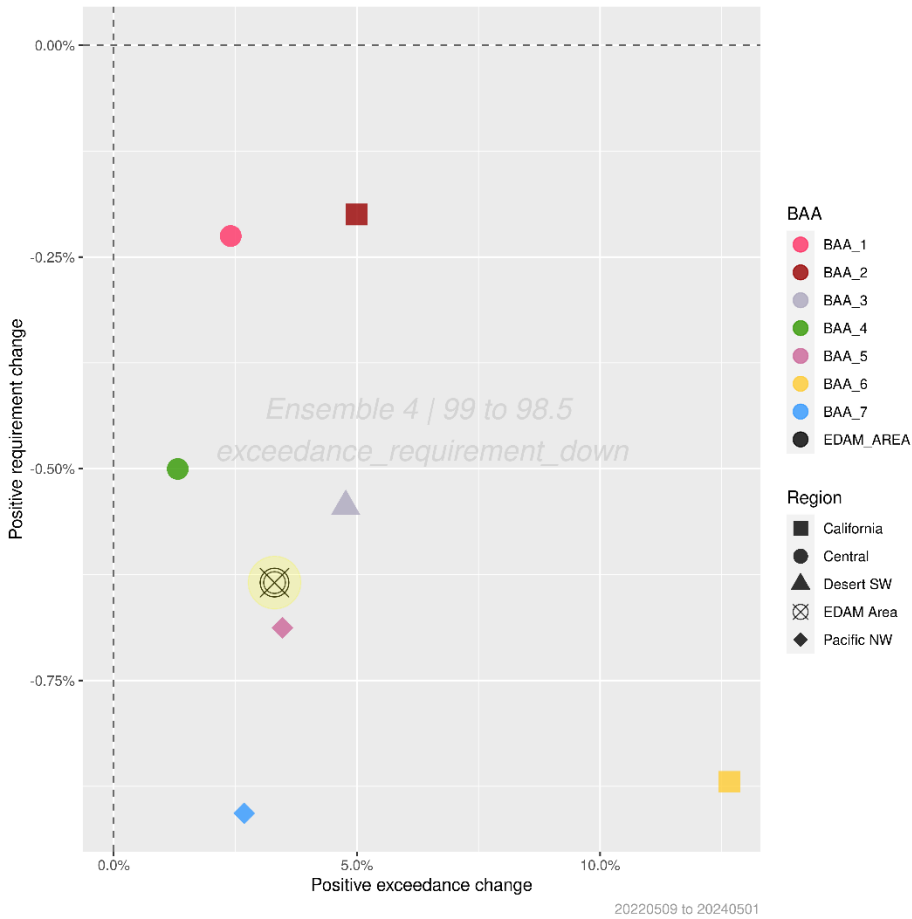


- BAA**
- BAA_1
 - BAA_2
 - BAA_3
 - BAA_4
 - BAA_5
 - BAA_6
 - BAA_7
 - EDAM_AREA
- Region**
- California
 - Central
 - Desert SW
 - EDAM Area
 - Pacific NW

IRU

IRU

Ensemble 4

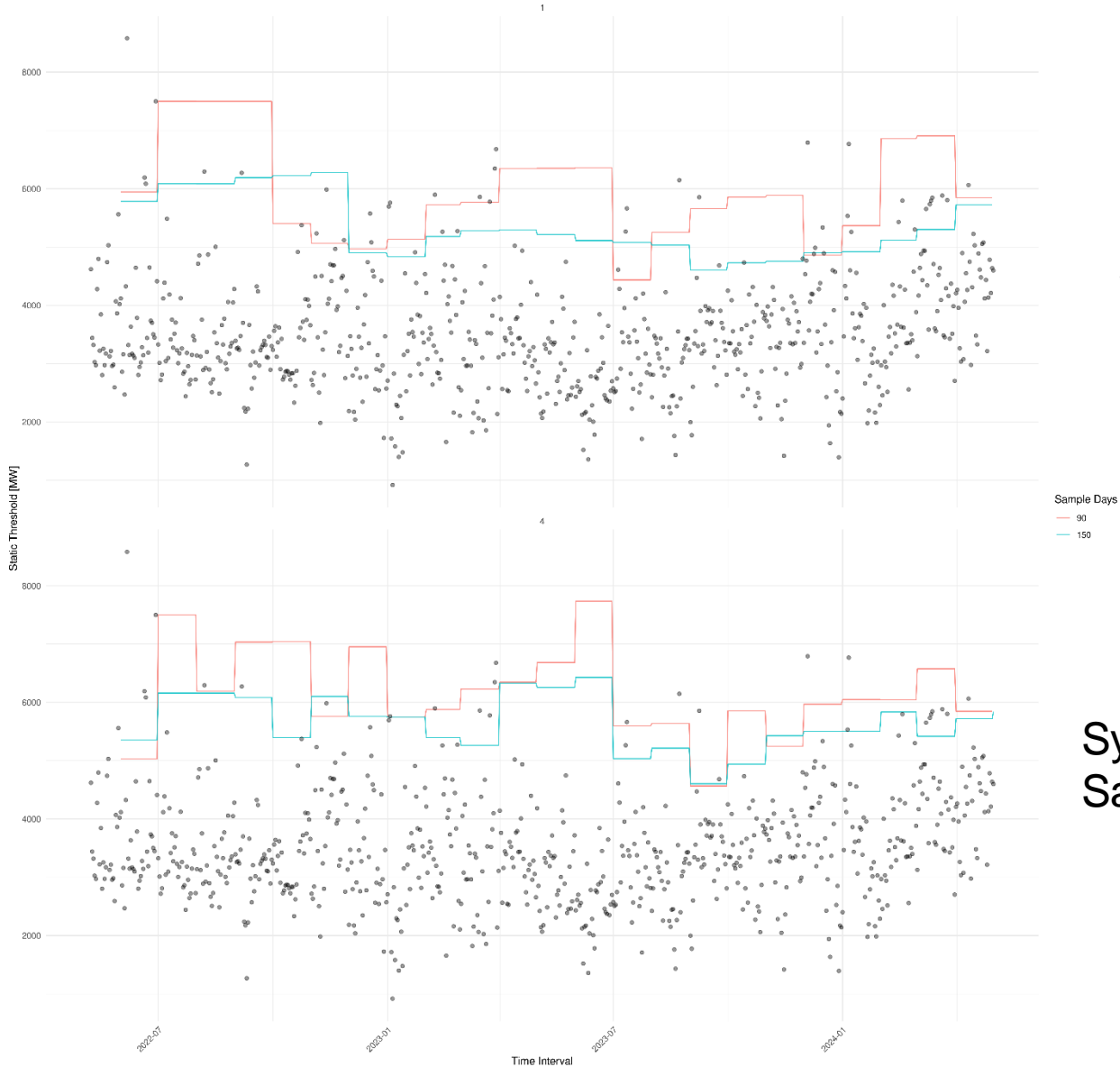


IRD

IRD

Ensemble 5

Static Up Thresholds by Date | Faceted by Sample Scheme | Colored by Sample Days
Max Uncertainty by Date (black dot)



Rolling
Sample (1)

Symmetric
Sample (4)

IRU

Static Down Thresholds by Date | Faceted by Sample Scheme | Colored by Sample Days
Min Uncertainty by Date (black dot)



Rolling
Sample (1)

Symmetric
Sample (4)